



Create exceptional experiences in a premium, fully customisable event space. Elevate your occasion with professional audio, video, and lighting solutions provided by trusted AVL production partners.

Our production partners



# EXPO AV

## The Company

Expo AV Pte Ltd (EAV) is a leading audio, video, and lighting company offering advanced AVL technology and comprehensive services, including equipment rentals, production management, and installations. Specialising in corporate events and conferences, EAV enhances audience experiences with creative solutions like 3D mapping and development of AR / VR content through their in-house agency, DK Studios. Since 2006, they have served diverse clients and have been the Technical Production Partner for Singapore Expo's Apex Plenary Hall since 2019. From 2025, EAV is appointed as the Official Technical Production Partner for D' Marquee, located at Downtown East, Singapore.



# D' MARQUEE

Delivering unique experiences in a premier, fully customisable 2,400 sqm pillar-less, air-conditioned event space at Downtown East,

Get Started





# DIGITAL KITCHEN STUDIOS

Our Production Partner - Creative Content Production

Digital Kitchen Studios Pte Ltd (DKS), a division of Expo AV Pte Ltd, is a forward-thinking creative agency specialising in innovative event and experiential marketing solutions. As pioneers in 3D video mapping projections since 2010, the company delivers transformative, immersive experiences that redefine engagement.

Renowned for crafting unique digital strategies, Digital Kitchen Studios provides comprehensive solutions that integrate strategic planning with seamless production pipelines. This expertise spans UI/UX development, interactive programming, facial and gestural tracking, and advanced social media integration.

Under the leadership of Founder and Managing Director Gerard Rodrigues, the company is supported by a dedicated team of multimedia professionals, specializing in projection mapping, content creation, and both live and virtual event production.





# THE PRODUCTION INITIATIVE

## Our Production Partner - Broadcast Solutions

Another division of Expo AV Pte Ltd, leverages advanced technology to enhance event accessibility and enjoyment. Specialising in broadcast solutions, TPI empowers corporate clients with seamless, secure virtual experiences supported by a robust cloud-based infrastructure.

Focused on user-friendly service, TPI ensures clients of all technical backgrounds can effectively utilise their solutions. An experienced team provides expert guidance and support to maximise event impact.

Renowned for high-quality, innovative solutions, TPI serves businesses of all sizes, creating engaging, interactive experiences with superior audio and video quality and seamless connectivity.



# INTRODUCTION TO EXPO AV

## Expo AV Pte Ltd for Your Event Production Needs

Expo AV Pte Ltd stands as a trusted leader in the events production industry, with over 18 years of expertise providing innovative AV solutions for Singapore's MICE industry. Our skilled professionals specialise in tailored solutions, designing and implementing customised AV setups that align perfectly with your event objectives.

We offer the latest, most reliable hardware and software to ensure seamless execution and top-tier performance. Partnering with reputable venue partners, we streamline logistics and provide versatile spaces, simplifying planning and ensuring effortless event execution.

Committed to client satisfaction, our project and technical teams are always ready to troubleshoot, assist, and ensure flawless events. We provide competitive pricing without compromising quality, delivering the best value for your investment.

Focusing on long-term partnerships, we adapt and enhance your AV solutions as your events grow and evolve. With Expo AV Pte Ltd, you gain a reliable partner dedicated to your success.



# OUR CORE VALUES

## People and Relationships at the Core

At Expo AV Pte Ltd, we are committed to building strong, lasting relationships with our clients, vendors, and employees. Our business is center around understanding the unique needs of each partner, enabling us to provide personalised solutions that inspire trust and collaboration.

We believe that meaningful connections are the key to long-term success. Whether it's through open communication with clients, nurturing vendor partnerships, or supporting our team, we prioritise mutual respect and shared goals. This people-first approach allows us to deliver exceptional service while fostering a culture of care within our company.

At our core, we understand that strong relationships drive business growth. By focusing on people, we remain dedicated to creating value and lasting partnerships that stand the test of time.



# OUR DISTINCT ADVANTAGE

With over 18 years of expertise in Singapore's MICE industry, we are a one-stop, 360° solution provider for all your event needs. Our comprehensive offerings range from advanced AV and lighting solutions to creative content production, multicam setups, broadcast services, and platforms for both onsite and online audiences—all supported by expert technicians for seamless execution.

Dedicated to client satisfaction, we provide round-the-clock support and cost-effective solutions without compromising quality. As your long-term partner, we continually adapt to your evolving needs, ensuring exceptional value and scalable support for your event's growth.

## 01.

State-of-the-Art Audio, Visual and Lighting Solutions that is managed and delivered by Skilled Expert Professionals.

## 02.

Acclaimed excellence in creative content production, specialising in animation, motion graphics, video & interactive media.

## 03.

Offering complete AV and production solutions with multicam setups, broadcast capabilities, and immersive studio technology

## 04.

Our interactive event platforms and dynamic content displays enhance experiences for both LIVE and Virtual audiences.



# EVENT AV & MULTICAM PRODUCTION

Event AV and Multicam Production are integral to the success of live events, broadcasts, and productions, working seamlessly to elevate the audience experience. Event AV focuses on designing and delivering exceptional audio and visual elements, while Multicam Production utilises multiple cameras and real-time editing to capture events from dynamic perspectives. Together, they create immersive and unforgettable productions that truly bring events to life.

To achieve this, we leverage a comprehensive suite of Blackmagic Design video technology, specialising in cutting-edge broadcast camera solutions. Our equipment inventory features an extensive range of 4K production cameras, complemented by a diverse selection of high-performance lenses, including an assortment of box and prime lenses, to meet the most demanding production standards.



# PRODUCTION STUDIO

Green screen technology has revolutionised modern filmmaking and video production, providing filmmakers and content creators with innovative, cost-effective solutions for executing complex scenes and settings. Our production studio is a purpose-built facility designed to cater to a wide range of media production needs, equipped with advanced tools and state-of-the-art resources to ensure high-quality results.

The studio features a spacious **studio floor** measuring **10m (L) x 7m (D) x 3.5m (H)**, fitted with **4K broadcast cameras** and a **soundproof environment** for seamless production. The **Production Control Room (PCR)** is fully equipped with cutting-edge technology, including **Unreal Engine integration, camera tracking facilities**, and a robust **3 ISP system** with failover and load balancing, offering a total throughput of **5GB/s**.

For convenience and comfort, the **lounge area** provides a versatile space with a **viewing area, working stations, make-up and changing facilities**, as well as a **stocked pantry** with a fridge and water dispenser. This comprehensive setup ensures a professional and efficient environment for content creation across various formats.



# TRANSFORMING VISION INTO REALITY



## Virtual Set Building:

The virtual set will be build using Unreal Engine base of the requirements given. This virtual set will replace the green screen background in the final output.



## Keying & Subject Replacement

The actors or objects are placed in front of the green screen and a software removes the green background and replaces it with the desired background. The keyed subject is then composited onto the chosen background plate, creating the final composite image.



## Real-time Playback:

The composited video is then played back in real-time, which allows actors and directors to see the final result while recording. This helps with framing and timing to ensure a seamless integration between the subject and the background.

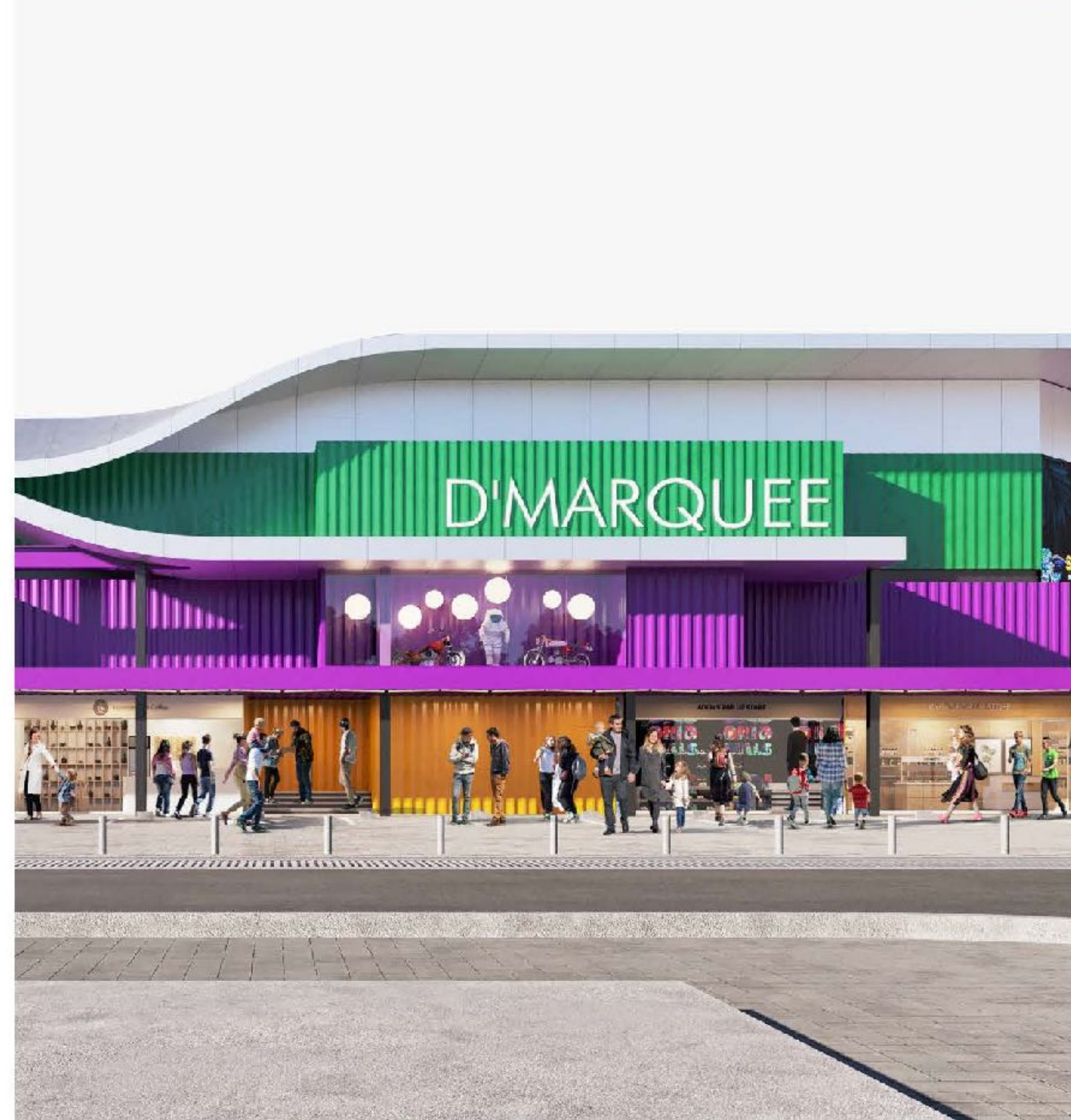


## Final Output:

The final output can be recorded or broadcasted live, depending on the production's requirements. This may involve further post-production work to refine the compositing or add additional effects.



# Introduction to D'Marquee



# STATE OF THE ART AVL SYSTEMS

Enhance your event with state-of-the-art AVL systems designed for superior performance:

- **Audio System:** High-quality line array speakers with powerful subwoofers for immersive sound.
- **LED Display & Control:** High-resolution indoor LED screens supported by advanced switching technology.
- **Lighting System:** Dynamic lighting capabilities with versatile moving yokes and professional-grade control systems.



# A Legacy of Unforgettable Events

From 2002 to 2023, D'Marquee 1.0 has proudly hosted countless experiences, creating cherished memories for over two decades.

Introducing the reimagined D'Marquee—a destination designed to elevate every event, now offering an impressive 2,400 square meters of pillar-less space.





# Designed to Adapt to Your Unique Needs

At D'Marquee, we redefine hospitality by creating unforgettable experiences for every occasion:

- Exceeding Expectations: Delivering exceptional services tailored to your needs.
- Customisable Packages: Flexibility to suit corporate or personal events.
- Versatile Gatherings: Perfect for team-building sessions or grand celebrations.
- Adaptable Spaces: Transforming venues to match the theme of your occasion.

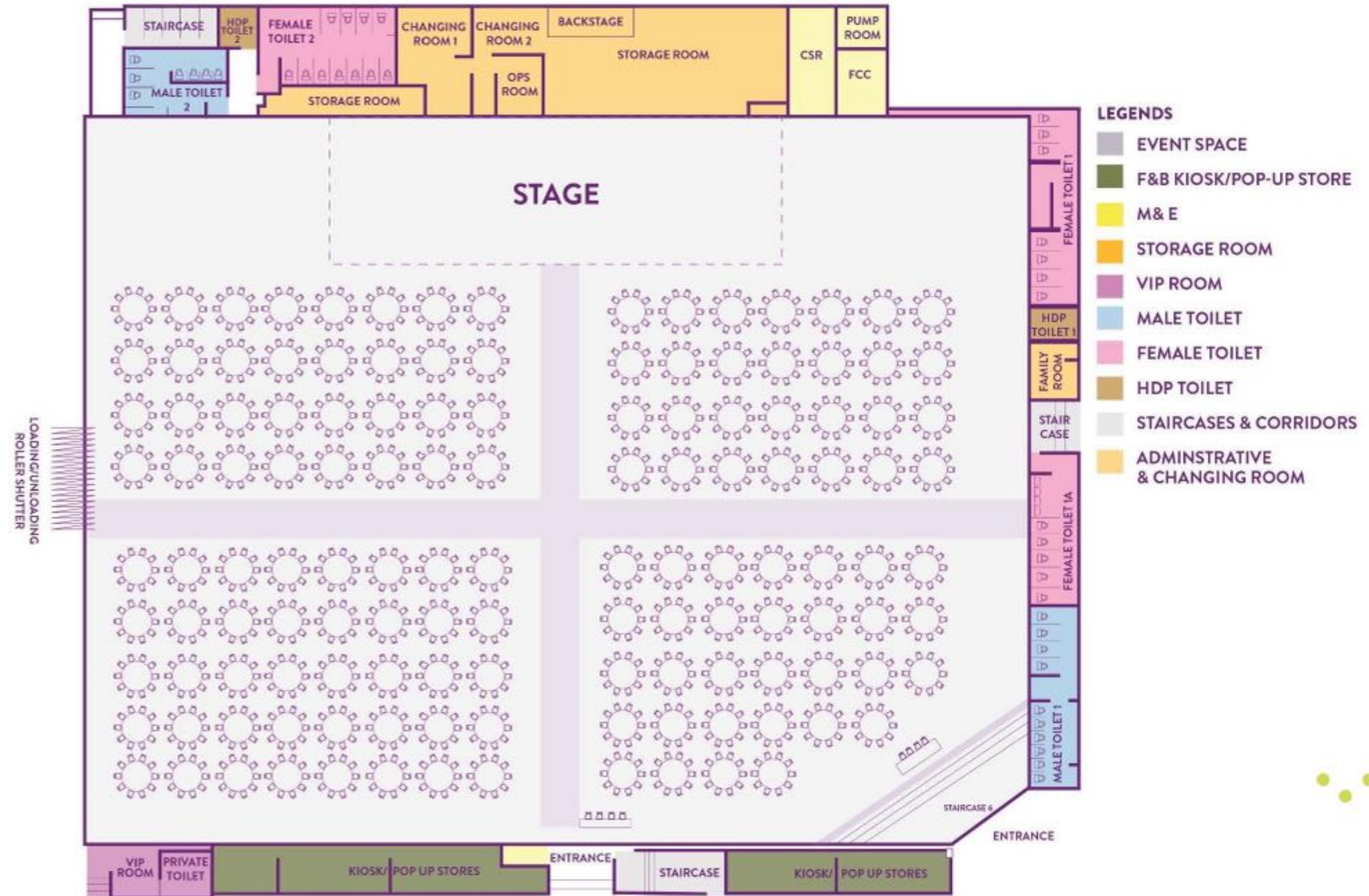
# D'Marquee at a Glance

- Floor Area: 2,400 m<sup>2</sup>
- Height: 8 meters
- Seating Capacities:
  - Theatre Style: 2,200 pax
  - Classroom Style: 500 pax
  - Banquet Style: 1,320 pax





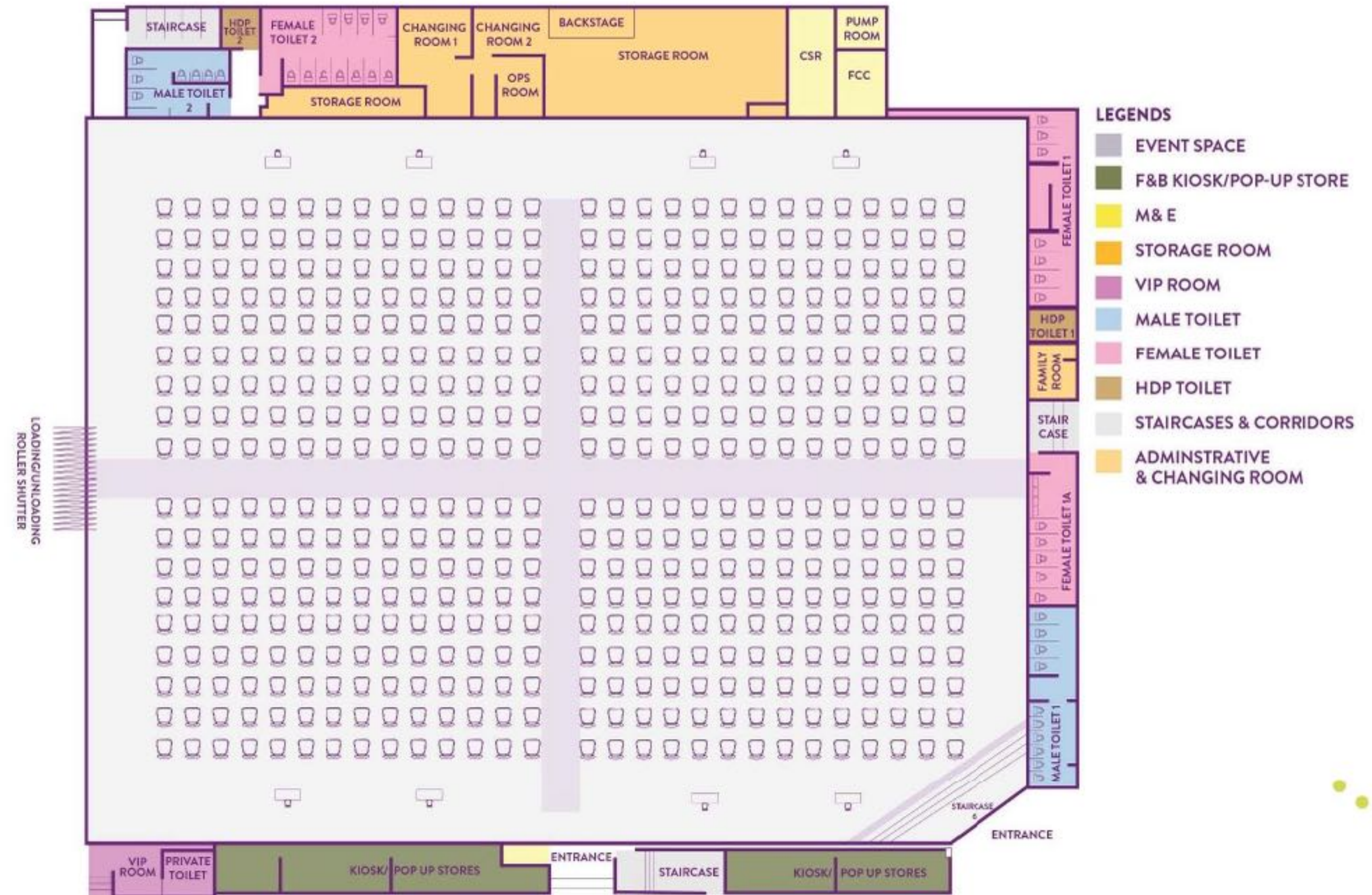
# Seating Arrangement: Banquet



\*IMAGES ARE FOR ILLUSTRATION PURPOSES ONLY



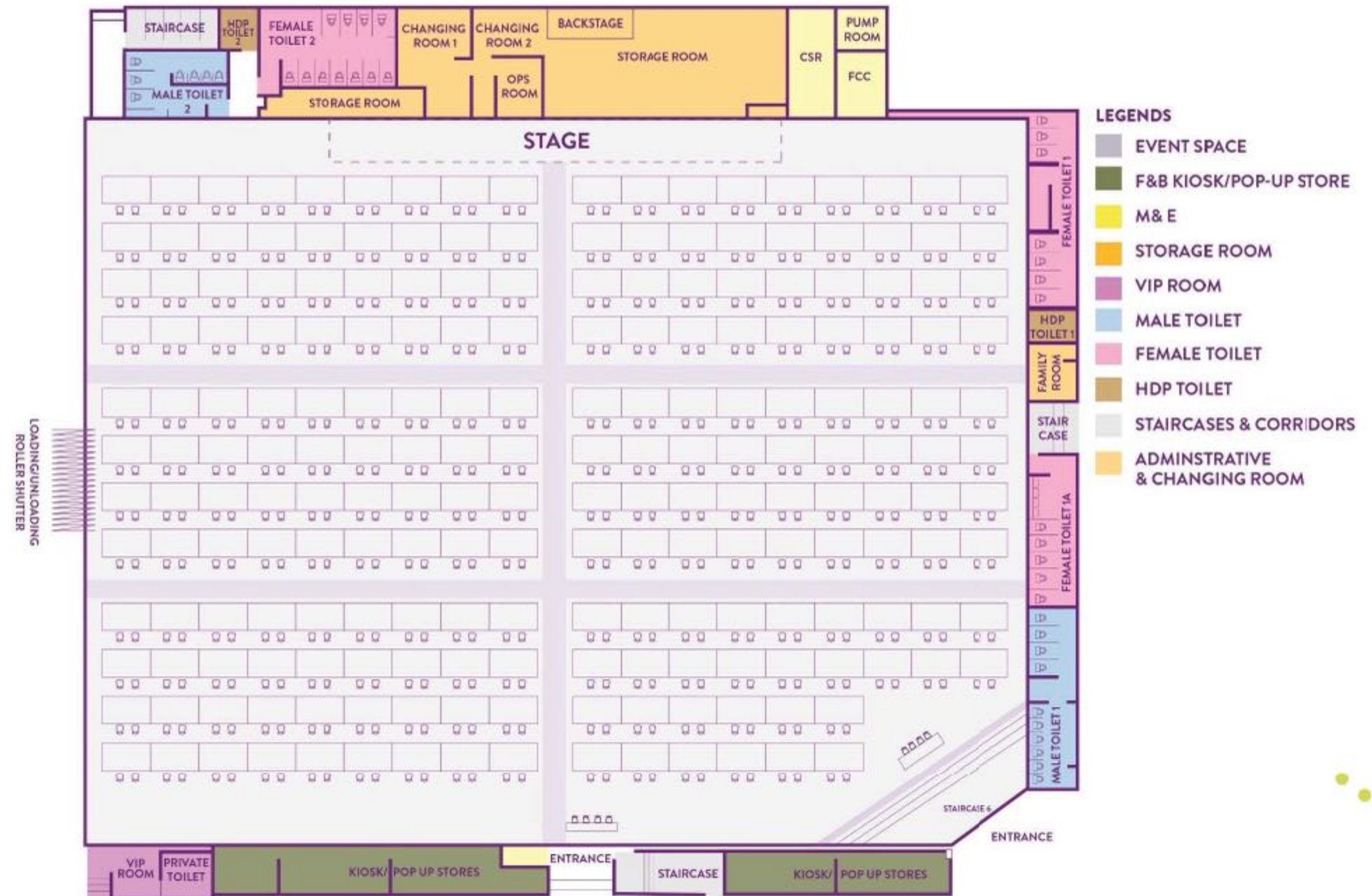
# Seating Arrangement: Classroom



\*IMAGES ARE FOR ILLUSTRATION PURPOSES ONLY



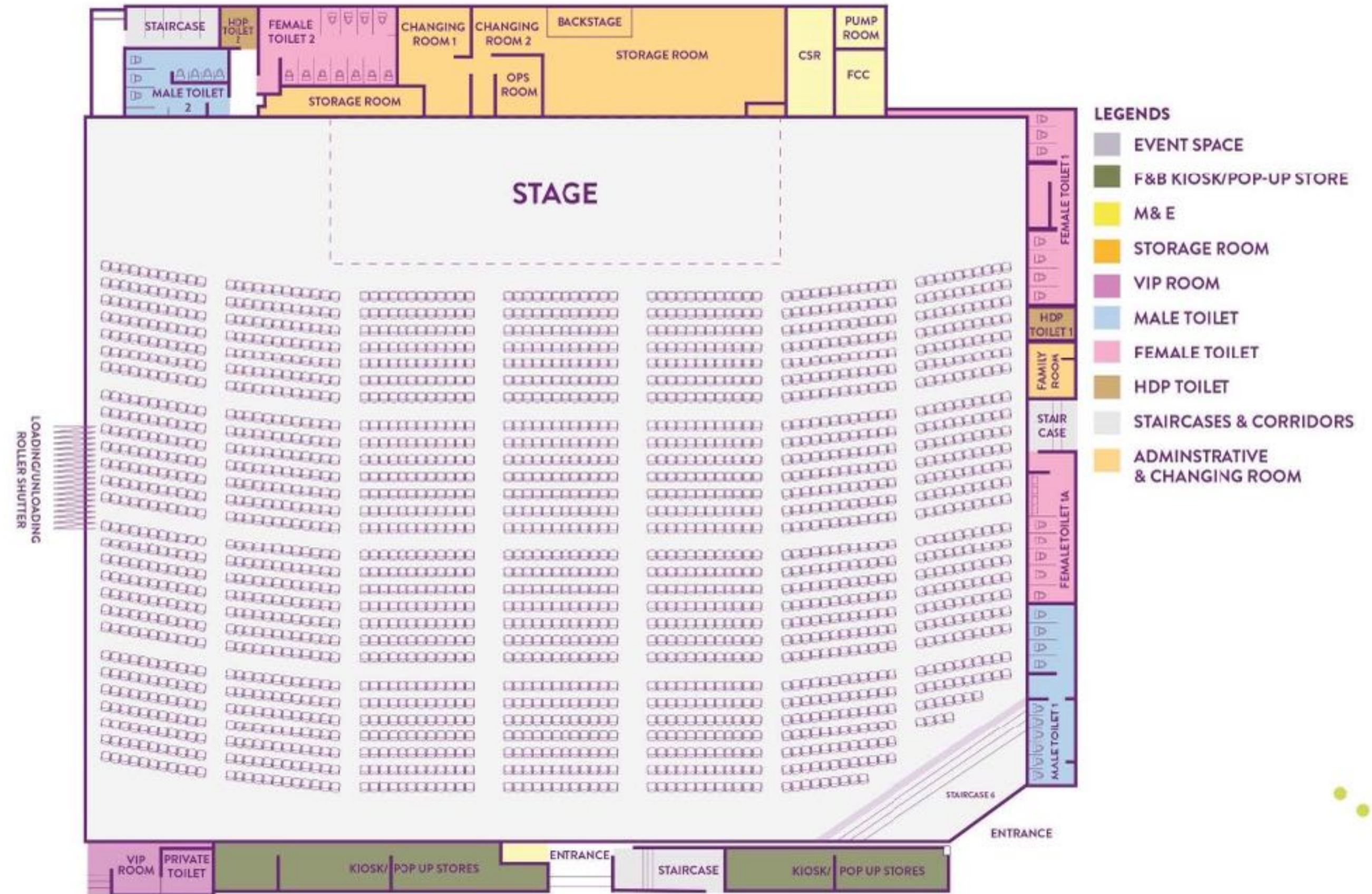
# Seating Arrangement: Conference



\*IMAGES ARE FOR ILLUSTRATION PURPOSES ONLY



# Seating Arrangement: Theatre



\*IMAGES ARE FOR ILLUSTRATION PURPOSES ONLY



# D'Marquee Solutions



# D'Marquee Solutions



1

## Versatile, Customisable Spaces

Flexible layouts tailored to fit events of any size or style.

2

## Seamless Logistics and Accessibility

Conveniently located near Changi Airport with extensive on-site amenities.

3

## Eco-Conscious Event Options

A Green Mark-certified venue committed to sustainable practices.

4

## Resort-Style Ambiance

A unique blend of relaxed resort feel and professional polish.

5

## Stress-Free Planning with Curated Packages

Comprehensive packages covering AV, catering, and full event management.

6

## Full Ecosystem of Amenities at Downtown East

Access to nearby accommodations, dining, and entertainment for an enhanced experience.



# Versatile Event Spaces with High-Quality Facilities



## Flexible "Black Box" Design

2,400 sqm pillarless space for setups from 2,200 theatre-style seats to 1,320 banquet seats.

## State-of-the-Art AV Facilities

Equipped with cutting-edge audiovisual facilities with expert support.

## Proven Track Record

Trusted by repeat clients for seamless event coordination.



■ **Professional Yet Relaxed Setting**

Customisable packages tailored to client needs.

■ **Lush Surroundings and Leisure Facilities**

Greenery and nearby leisure facilities enhance the experience.

■ **Ideal for All Event Types**

Trusted by repeated clients for delivering high-quality services across event types.

# Resort-Style Ambiance





# Curated Packages



## Tailored Event Packages

Fully customisable to fit specific event needs.

## Partnerships with Industry-Leading Vendors

Ensuring high-quality service and flexibility for events.

## Starter Packages for Every Need

Covers essentials for events of all sizes.



### ■ Proximity to Changi Airport

Minutes away from Changi Airport and Changi Business Park for easy access.

### ■ Nearby Accommodations Location and Dining Options

Close to accommodations and dining options.

### ■ Travel Efficiency

Less transit time, more event engagement.

# Accessibility to Airport



## Part of the Downtown East Ecosystem

Part of Downtown East with nearby leisure and dining options.

## Access to Comprehensive Amenities

Every need is met without leaving the area.

## Seamless Experience for Guests

Stress-free convenience for guests and planners.

# Full Ecosystem of Amenities



# Venue & Facilities Overview



# D'Marquee's Event Capabilities

D'Marquee offers a premium, versatile venue for all your event needs:

- **Wide Range of Events:** From intimate gatherings to large-scale productions.
- **State-of-the-Art Facilities:** Equipped with modern technology for seamless events.
- **Flexible Setups:** Easily adaptable for various themes and requirements.
- **Unforgettable Experiences:** Perfectly designed to leave lasting impressions.



# Event Types Supported by D'Marquee

## Types of events:

- Concerts
- Dinner and Dance Functions
- Consumer Shows
- Product Launches
- Exhibitions Trade Fairs
- Food Festival / Farmer's Market
- Charity Gala
- Comedy Shows
- Pop-Up Markets
- Large-scale Team Building Activities
- Sports & Recreation Activities (Sports League, Game Night)
- Weddings
- Tech Conferences
- Gaming Tournaments / E-Sports Event
- Carnivals
- Cosplay Convention
- Pet Shows
- Movie Screening Premiere
- Motor Shows or Car Exhibitions
- Artisanal Craft Fairs
- Silent Discos
- Pop Culture Conventions
- Photography Exhibitions
- Charity Walks or Run
- Music or Dance Festival



# Customisable Space for Unique Setups



D'Marquee's spacious, pillarless "black box" design offers 2,400 square meters of fully customisable space.

## Exhibition and Trade Booths

Ideal for product launches, tech expos, and consumer shows

## Themed Décor and Layouts

Tailored for corporate branding, charity events, or festive celebrations

## Interactive Zones

Flexible areas that support activities such as gaming tournaments, team-building stations, and creative showcases



# THANK YOU FOR VIEWING.



For more information regarding AVL enquiries, please contact:

**Gerard Rodrigues**

Expo AV Pte Ltd - Managing Director

Mobile: +65 9693 9053

Email: [gerard@eai.com.sg](mailto:gerard@eai.com.sg)

[www.expoav.sg](http://www.expoav.sg)



For more information regarding venue bookings, click on to the link:

[D' Marquee: Indoor MICE](#)

[Venue with D'Resort in Downtown East, Pasir Ris!](#)

